

## Specification

Model	LBB90SFP
Pick up Element	1/3" SONY 1.4Megapixel CMOS Sensor
Effective Picture Elements (HxV)	1305(H) X1049(V)
Resolution	1000TVL
Minimum Illumination	0.01 Lux/F1.2 0Lux (with IR LED ON)
S/N Ratio	More than 50dB
Scanning System	Progressive
Synchronous System	Internal, Negative sync.
Auto Electronic Shutter	NTSC: 1/60s~1/100,000s, PAL: 1/50s~1/100,000s
Gama Characteristic	0.45
IR Distance	60 Meters (with $\phi$ 5X72PCS Infrared LED)
IR Status	Under 10Lux by CDS
IR Power On	CDS AUTO Control
Video Output	1Vpp, 75 $\Omega$
Auto Gain Control	Auto
Power/Current	DC12V(+/-10%)/800mA
Lens	2.8-12mm Manual Zoom
Dimension (mm)	255.8(W) x 98(H) x 95(D)
Weight (g)	1700
Storage Temperature	-30~+60 $^{\circ}$ C RH95% MAX
Operating Temperature	-10~+50 $^{\circ}$ C RH95% MAX

## Packing List

No	Name	Model	Number
1.	Weatherproof IR Color Camera	LBB90SFP	1
2.	User Guide	LBB90SFP	1

Franchiser:

## LBB90SFP Color Camera

### Weatherproof IR Color Camera



**Notes :** Before providing power for the camera, please read this User Guide in detail!

Do not attempt to disassemble the camera. If the camera can not work, please contact local franchiser or our company.

## BRIEF OF PRODUCT

### \* Sensor (CMOS)

Adopt SONY 1/3" CMOS Sensor.

### \* Auto Gain Control (AGC)

Built-in auto gain control (AGC) circuit. The color camera can get high definition picture in low Lux condition.

### \* Scanning Mode

NTSC or PAL mode.

### \* Water Resistance

IP66.

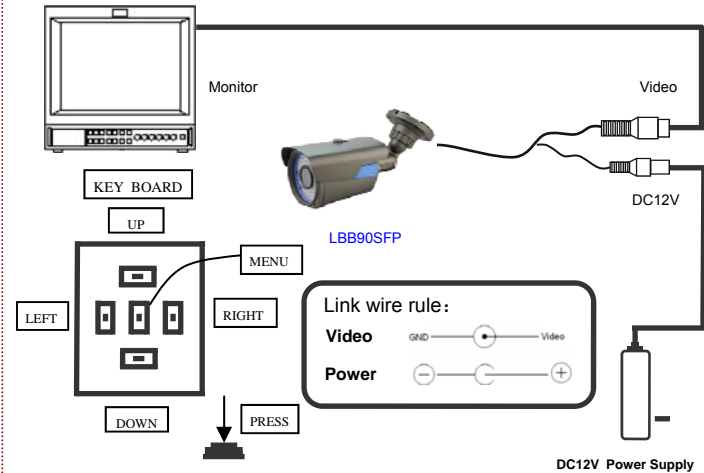
### \* Support UTC function (optional)

With UTC Remote Controller for the convenience of OSD menu setting.

### \* OSD SETTING

IMAGE	3D-NR	ON/OFF
	WDR	ON/OFF
	IRIS	AUTO/MANUAL
	AE MODE	CLOBAL/CENTER/CENTERWEIGHT/BLACKLIGHT/FRONTLIGHT/DISTINGUISH INTELLIGENT
	WB	AWB-PRO/AWB-TEMPORAL/AWB-AI/AWB-GW
	IMAGE ENHANCE	SHARPNESS/CONTRAST/SATURATION
	TURN	MIRROR/FLIP
	BRIGHTNESS	0.10.20.....250
	ZOOM IN	1.2.3.4.5
DAY&NIGHT	AUTO	
	EXTERNAL	
	COLOR	
ZONE MASKING	COLOR	MOSAIC/WHITE/YELLOW/CYAN/GREEN/MAGENTA/RED/BLUE/BLACK
	AREA NO.1- AREA NO.8	
MOTION DETECTION	SENSITIVITY	WEAK/LOW/MIDDLE/HIGH
	AREA NO.1~NO.4	
VIDEO STANDARD	PAL/NTSC	
LANGUAGE	ENGLISH ITALIANO FRENCH PYCCKNN CHINESE	
LOAD DEFAULT		
SOFT VERION		
SAVE&EXIT		

## CONNECTING



## TROUBLE AND SOLUTION

### 1. No Picture after providing power

- May be the power supply voltage abnormality, please check the power supply voltage and pole whether exactitude.
- Please check all the connecting cable and monitors whether be connected correctly or not.

### 2. The picture level direction have flowing interference ripples

- May be caused by the power supply AC ripples, it need filter the wave of the power supply.
- Check the monitor and peripheral equipments used.

### 3. The picture background color changes continuously

- The fluorescent lamp's electromagnetic field cause color roll. This is proper phenomenon of the cameras.
- Reduce the fluorescent lamp numbers or increase the distance between the camera and the fluorescent lamps can improve it.
- Use power supply external sync. camera can solve it.

### 4. The picture smear too mass

- The power supply's voltage unstable.
- Connecting cables not connect correctly or have high impedance.



### Notes:

- The power supply must through safe attestation. Its output voltage, current, voltage polarity and operating temperature must match the camera's requirement.
- When using the camera in the thunderbolt condition, please note to mount Anti-thunder device or put off the power supply plug and cable.
- In order to capture high quality pictures, the power supply's cable and video output cable should not be too long.

## INTRODUCTION

Congratulations on your purchase of this product. This User Guide suits LBB90SFP product. We adopt the latest SONY technical of sensor and driver. The most attractive characteristics are small and easy hidden, suits the elevator and corridor. In addition, it owns the characters of high definition and stability, strong anti-jamming, rich and real color. Fixing and using this model are convenient too. It is very good for you to apply to your CCTV system.

Please read this instruction manual carefully to ensure proper use of the product.



The symbol is intended to alert the user to the presence of important operating and maintenance (servicing) Instructions in the literature accompanying the appliance.



The symbol is intended to alert the user to the presence of uninsulated 'dangerous voltage' within the product's enclosure that may be of sufficient Magnitude to constitute a risk of electric shock to persons.

!	<b>CAUTION:</b> RISK OF ELECTRIC. DO NOT OPEN	!
<b>SHOCK</b>		
<b>CAUTION: TO REDUCE THE RISK OF ELECTRIC</b>		
<b>DO NOT REMOVE COVER OR BACK NO USER SERVICEABLE PARTS INSIDE. REFER SERVICING</b>		
<b>CAUTION: TO PREVENT ELECTRIC SHOCKS AND RISK OF FIRE HAZARDS, DO NOT USE OTHER THAN SPECIFIED POWER SOURCE.</b>		



### Note:

- Please note the camera's operating temperature and its using environment requirement. Avoid using the camera at too high or too low temperatures. The operating temperature is -30~+60°C. (Recommendatory operating temperature is -10~+50°C.)
- Never make the camera face the sun or bright object. Otherwise, it will damage the CMOS.
- Do not mount the camera near by the radiator or heater.